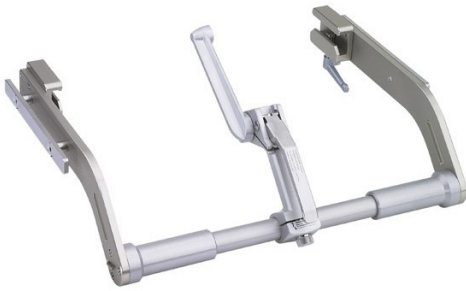




Adjustable Base Unit for Neurosurgical Headrest (Parkbench)

3001006



Adjustable Base Unit for Neurosurgical Headrest
(Parkbench)

- Old reference: 3001006
- Aluminium construction
- Direct fixation on EU rails (25x10 mm)

COMPATIBLE WITH

SURGINOX - EASYMAX - HIMAX - CMAXT - CMAXS - GMAX - CMAX3 - CMAX3-DRIVE - KERNA

