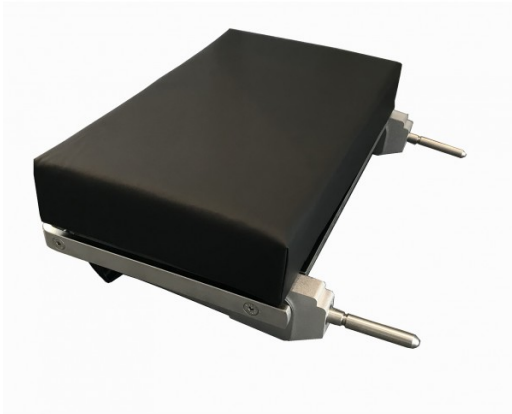




Compensated Single Articulation Headrest (CMAX Xray)

HEAD05D



Compensated Single Articulation Headrest

- For CMAX Xray
- Length: 330 mm
- Width: 500 mm
- Weight: 6 kg
- Tilt: 35°/-90°
- Mattress not included

Replacement Mattress

- H005BW: 50mm mattress for HEAD05D, welded seam
- H05CV3: 80mm cushion for HEAD05D multi-density foam technology, welded seam

COMPATIBLE WITH CMAX XRAY

