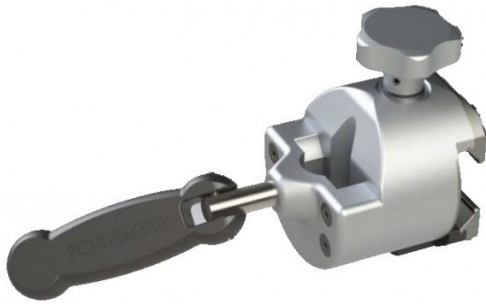




INFINITY Universal Clamp Fixed

800-0386-F



Fixed Infinity Clamp which accepts Ø18 mm round post and blade accessories 6.35 x 25.4 mm and 9.52 x 25.4 mm.

Fit All Rail types.

COMPATIBLE WITH

EASYMAX - HIMAX - CMAX XRAY - 5085 SRT - CMAX3 - CMAX3-DRIVE - KERNA - 4095 - 5095

